

Americans' Support for AI Development - Nowcasted Daily with Open Data and Methods

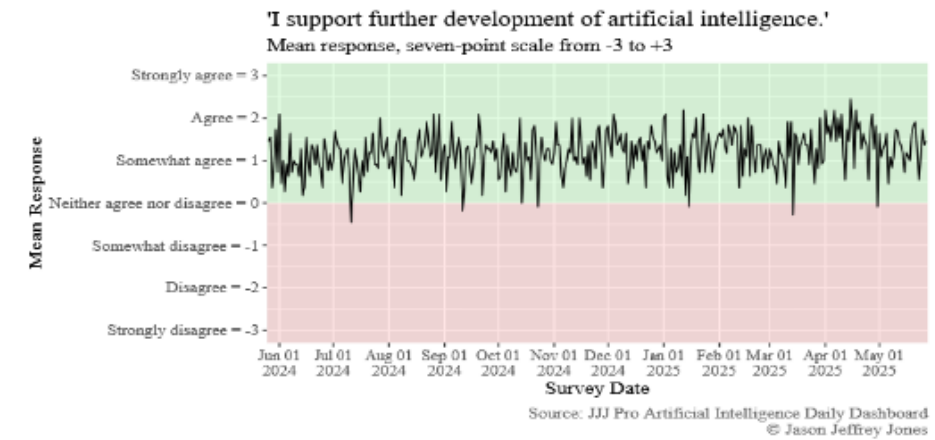
Jason Jeffrey Jones

<https://jasonjones.ninja>

TL;DR

- I built an automated system to
 - Field daily repeated surveys
 - Present daily-updated results as web page
 - Distribute daily-updated .csv data file
 - [Social Science Dashboard Inator](#)
- I ran a demo project April 2024 – Today
 - Focal item: **AI Support**
 - Free, open, daily-updating analysis and data
 - [AI Daily by Jason Jeffrey Jones Productions](#)

AI Support INCREASED on 2025-05-27.

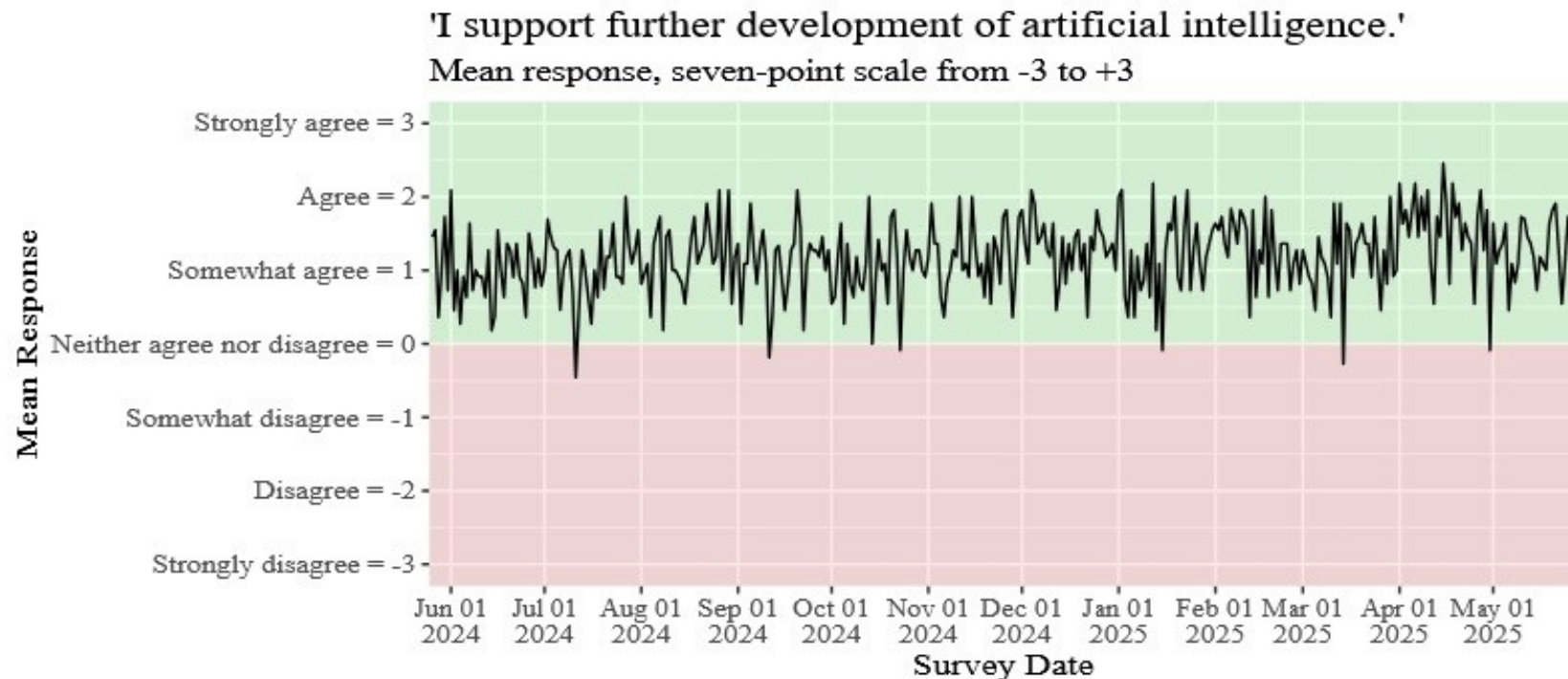


Motivation



AI Daily by Jason Jeffrey Jones Productions

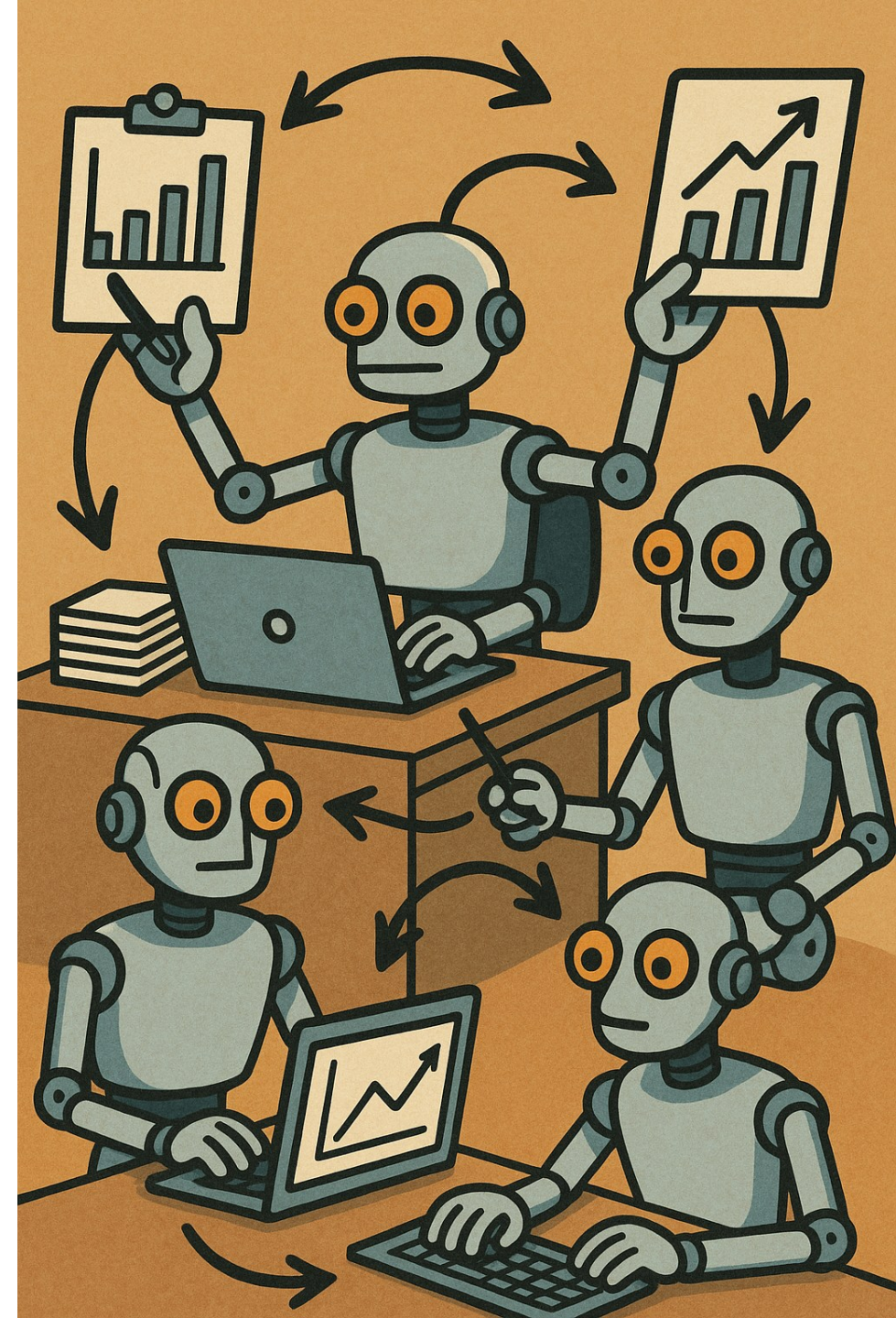
AI Support **INCREASED** on 2025-05-27.



Source: JJJ Pro Artificial Intelligence Daily Dashboard
© Jason Jeffrey Jones

Motivation

- Traditional social science is too slow for the 21st century.
- We learn quickly through short feedback loops.
- High cadence surveys provide short loop of analyze-predict-test.
- For greater precision:
 - Aggregate to monthly or annual.
 - Scale up spend \$\$\$.



Inator Methods (General)

One Time Setup

- Create survey in Qualtrics.
- Set up Prolific project to recruit respondents.
- Fund Prolific project.
- Get Prolific and Qualtrics API keys.

Automated Daily Process

- Python scripts run on schedule to:
 - Download responses.
 - Merge responses with demographics.
 - Update cumulative data file.
 - Create visualizations.
 - Run analysis.
 - Update website with today's results.
 - Recruit today's new respondents.

AI Daily Methods (Specific)

- Primary Item: How much do you agree with the following statement: I support further development of artificial intelligence.
 - Seven-point Likert scale.
- Additional items:
 - Rationale
 - Generalized Trust
 - Risk Willingness
 - Political Party Affiliation
- 11 new Rs per day. Total N over 5,000.

12:29

How do you see yourself: are you generally a person who is fully prepared to take risks or do you try to avoid taking risks?

Please choose a number, where the value 0 means: 'not at all willing to take risks' and the value 10 means: 'very willing to take risks'.

Generally speaking, would you say that most people can be trusted or that you can't be too careful in dealing with people?

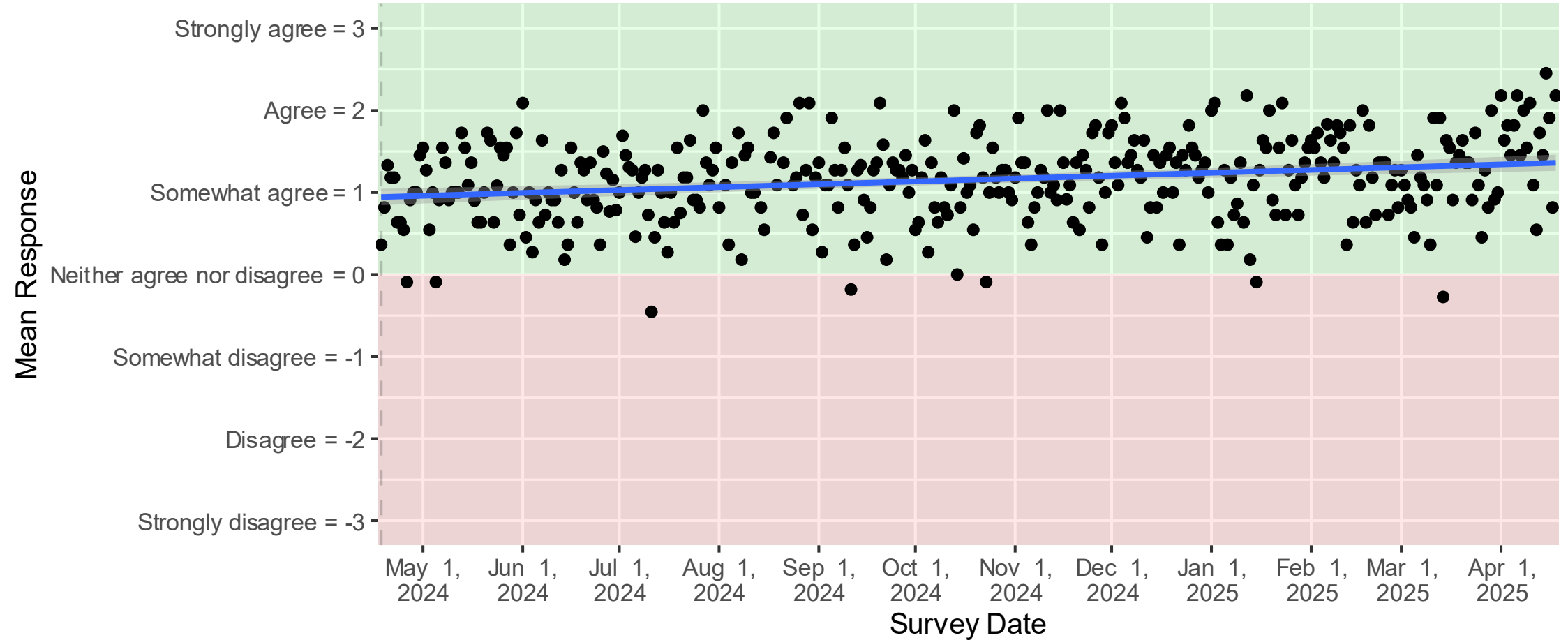
You can't be too careful in dealing with people.

Most people can be trusted.

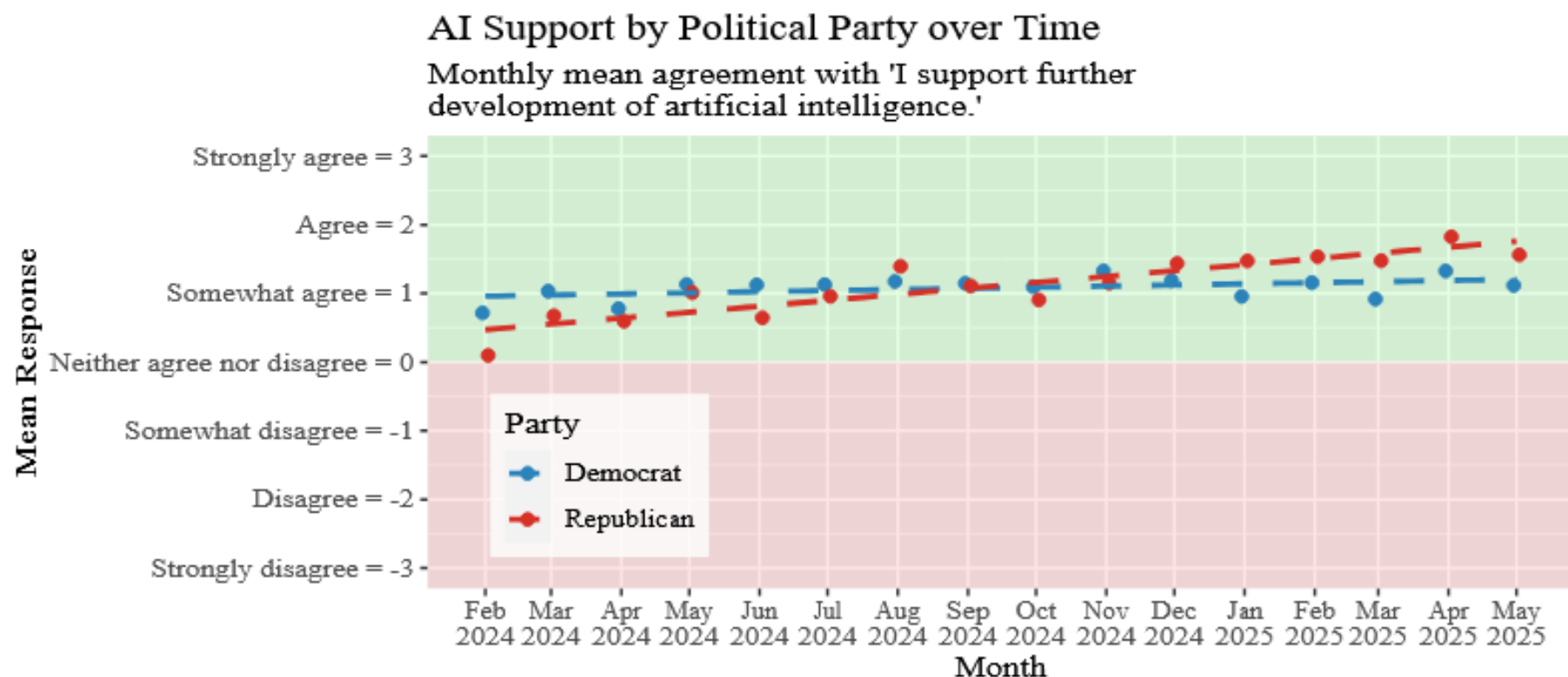
→

'I support further development of artificial intelligence .'

Mean response, seven-point scale from -3 to +3



Are Democrats and Republicans polarizing on AI Support?



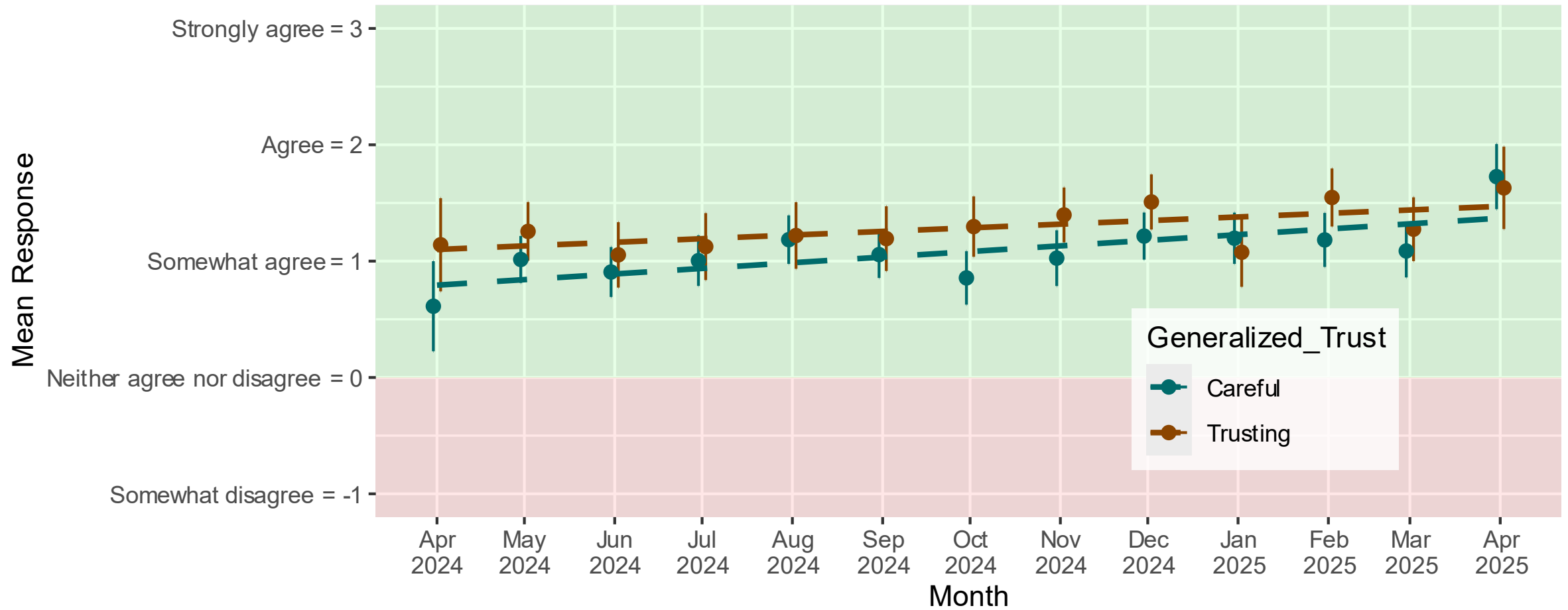
Source: JJJ Pro Artificial Intelligence Daily Dashboard
© Jason Jeffrey Jones

The current data support the following:

- **Republican AI Support and Democrat AI Support changed at different rates over time.**
- **Over time, AI Support increased.**
- **Together, political party affiliation and time explain 2.1% of the variation in AI Support.**

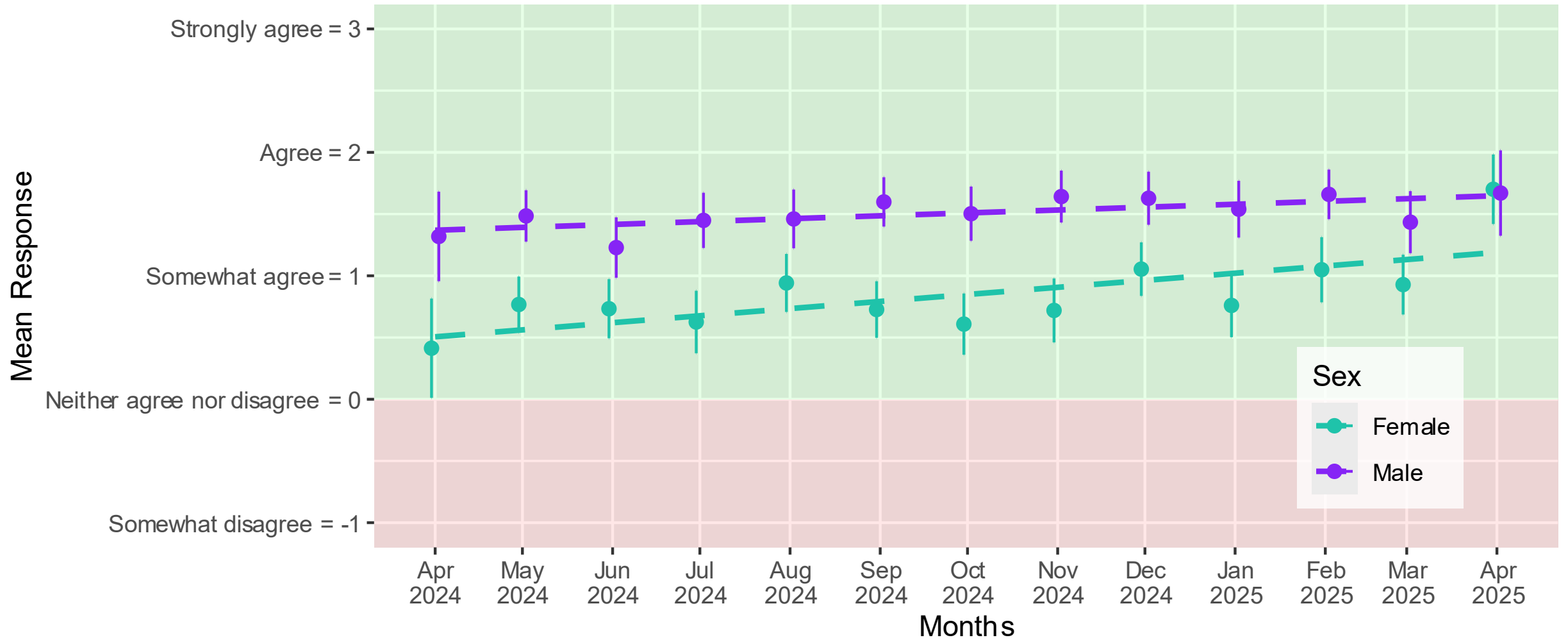
AI Support by Generalized Trust over Time

Monthly mean agreement with 'I support further development of artificial intelligence.'



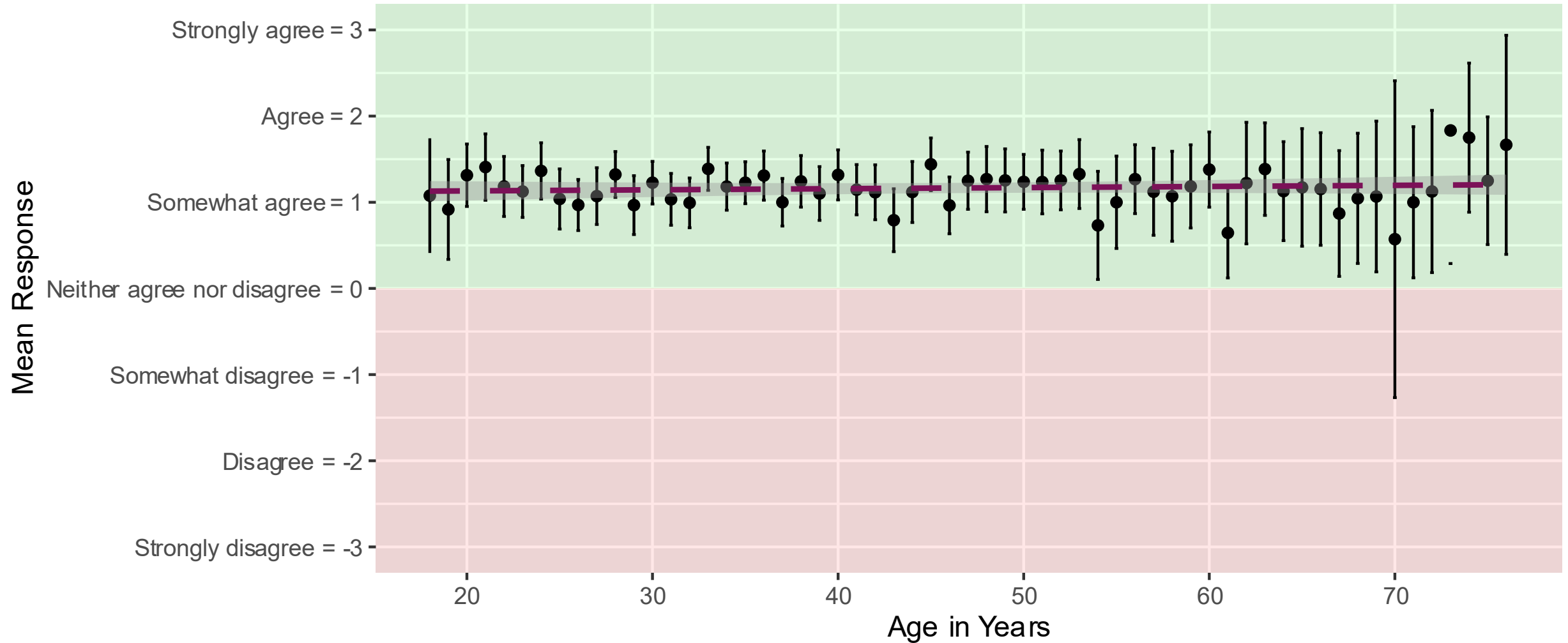
AI Support by Sex over Time

Monthly mean agreement with 'I support further development of artificial intelligence.'



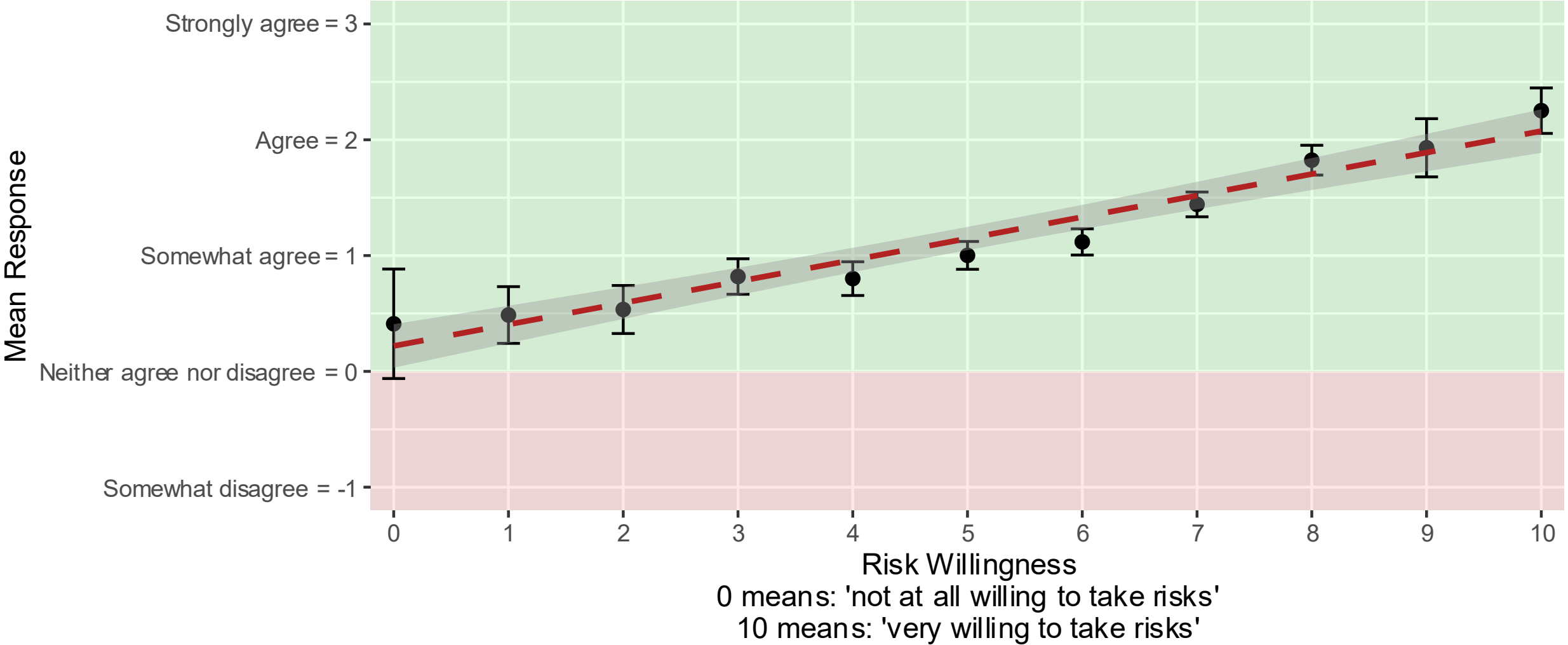
AI Support by Age

Mean agreement with 'I support further development of artificial intelligence.'



AI Support by Risk Willingness

Mean agreement with 'I support further development of artificial intelligence.'



The Future

- Daily nowcasting is a powerful method to improve and accelerate social science.
- I created Social Science Dashboard Inator.
 - A free, open system to automate the daily nowcasting process.
- In the future:
 - Research communities create SSDIs.
 - SSDIs create research communities.
 - Modest investments of time and money lead to consistent, persistent, growing, public datasets.



Jason Jeffrey Jones Productions

Jason Jeffrey Jones Productions sponsors and
publishes rigorous, replicable computational
social science research

(and also alternate history football fan fiction).

Dashboard: <https://jasonjones.ninja/social-science-dashboard-inator/jjjp-ai-daily-dashboard/research-questions.html>

Preprint: <https://arxiv.org/abs/2412.05163>

Dr. Jason Jeffrey Jones: <https://jasonjones.ninja/>